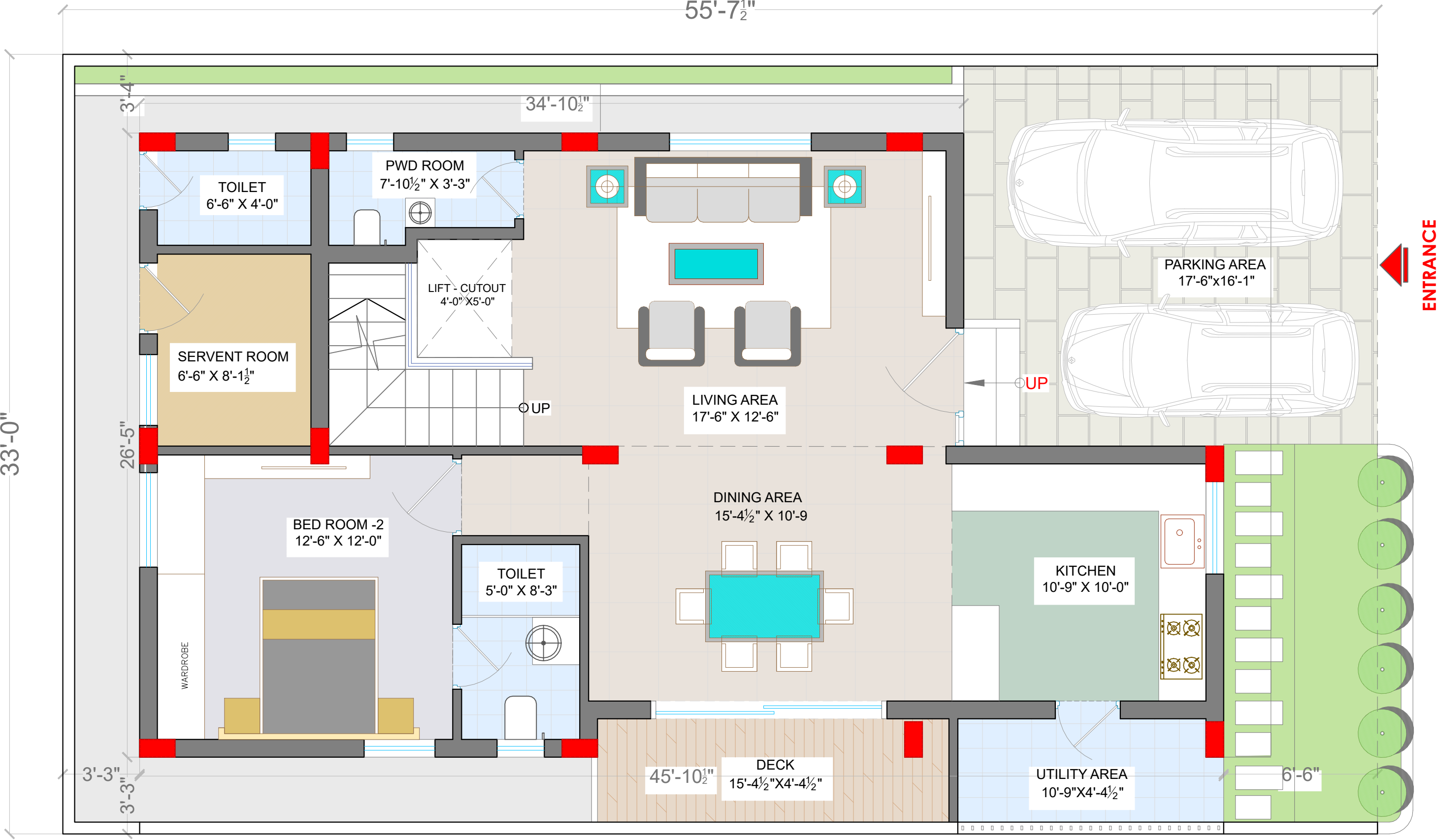
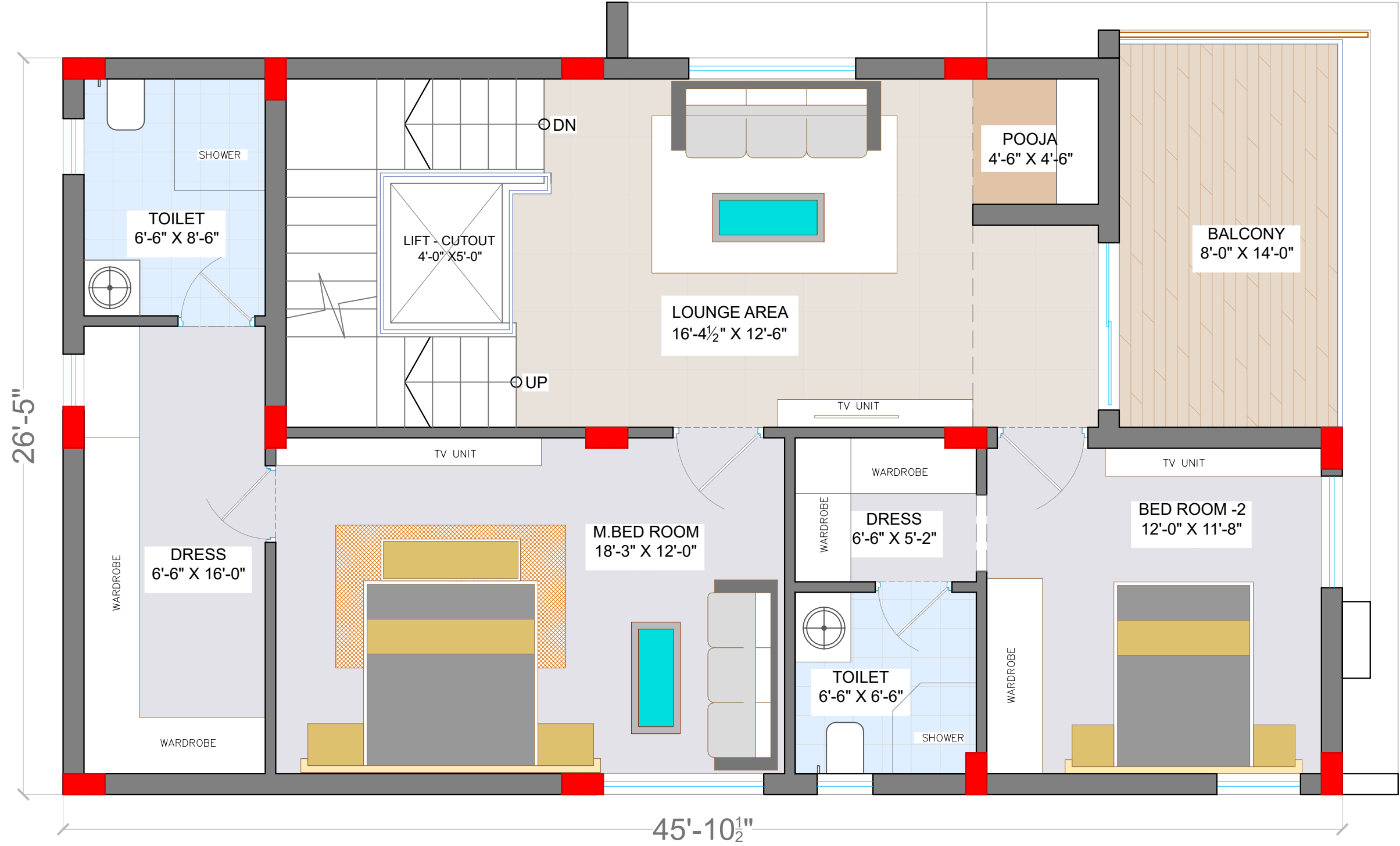


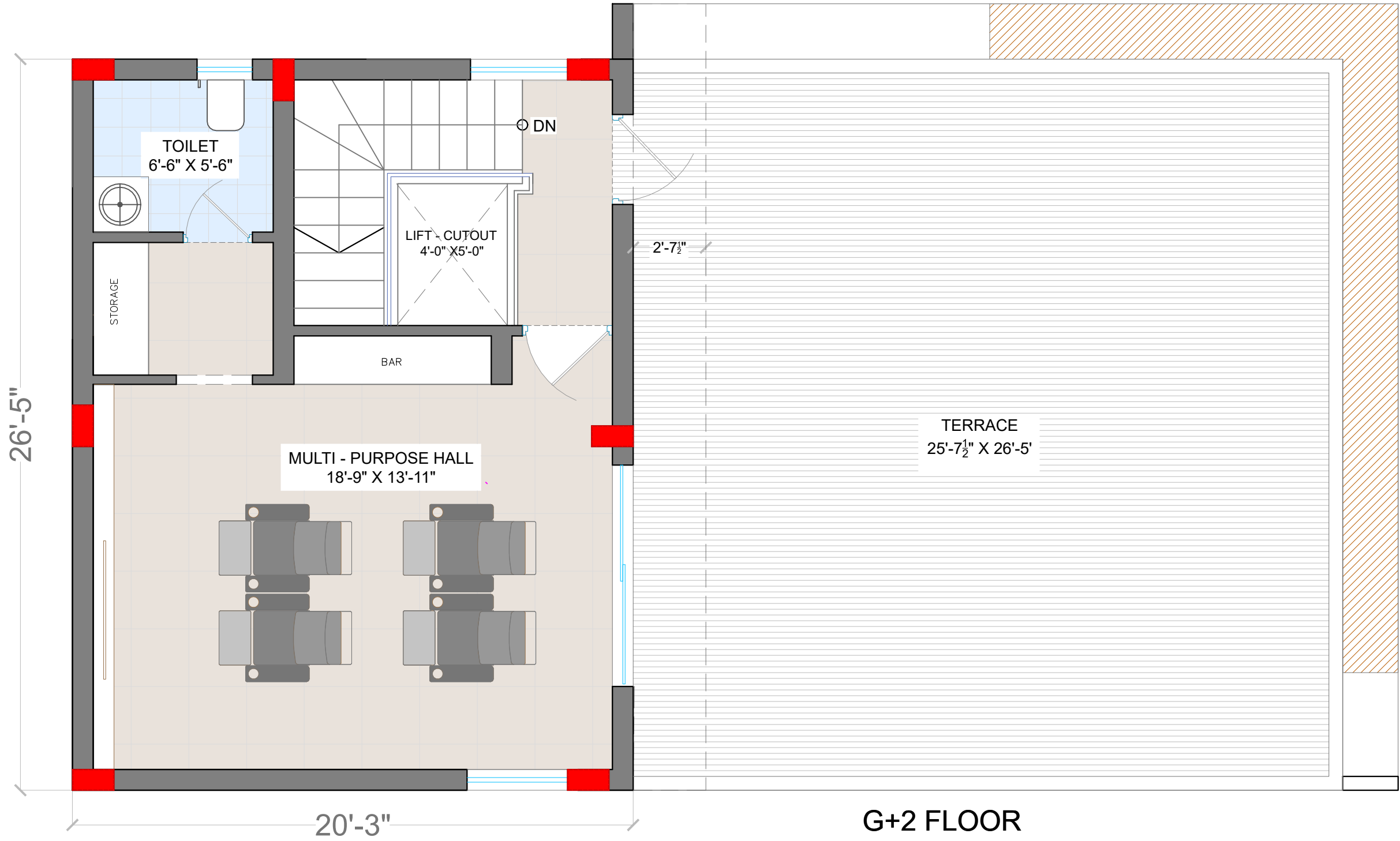
OP-2



GROUND FLOOR PLAN
FLOOR AREA - 1212 sq ft



FIRST FLOOR PLAN
FLOOR AREA - 1244sq ft



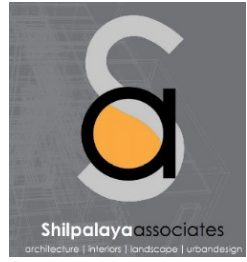
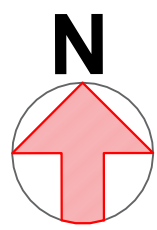
TERRACE FLOOR PLAN
AREA - 604 sq ft

G+2 FLOOR

FLOOR	AREA
GROUND	1,212 SQFT
FIRST	1,244 SQFT
TERRACE	604 SQFT
TOTAL	3,060 SQFT

WINDOWS - 18 NO'S
DOORS - 18 NO'S

EAST FACING 204 SYDS VILLA
PROPOSED PLOTTED DEVELOPMENT @ SIRIGIRIPURAM



16.11.2021